

Super Screw Fasteners



Troughing belt



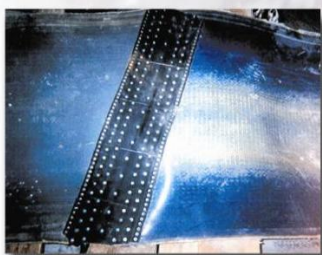
Sidewall vertical belt



New belts with Super-Screw



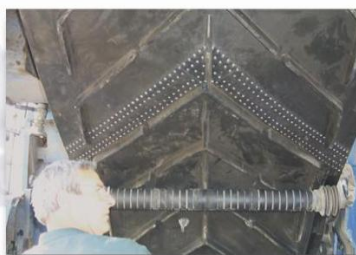
Rip Repair



New belt with old belt



Pipe conveyor



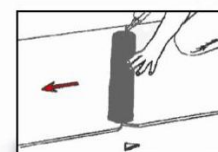
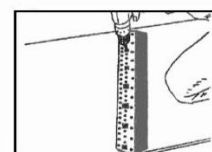
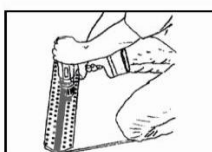
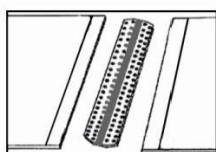
Chevron belt



Heat resistant belt

Flexible and elastic lacing with self tapping screws:

- No drilling preparation, no template
- Self drilling of the screws through the belt
- Good compatibility with scrapers



Super-Screw 35



Super-Screw 63 & 65



Super-Screw 80 & 85



Super-Screw 100 & 105



Super-Screw 125



Super-Screw 180



Super-Screw 200



Belt Thickness	3.5-11mm	5-15mm	5-15mm	5-15mm	8.5 – 20.5mm	8.5 – 20.5mm	8.5 – 20.5mm
Min . Pulley Ø	160-200mm	200-400mm	200-400mm	250-400mm	300 – 500mm	500mm	300 – 500mm
Max Belt strength	400N/mm	630N/mm	1000N/mm	1250 N/mm	1600 N/mm	2000 N/mm	2000 N/mm
Max Belt Tension	35N/mm	63N/mm	80N/mm	100 N/mm	125 N/mm	180 N/mm	200 N/mm
Material	Reinforced rubber corresponding to conveyor quality: Abrasive, heat, oil, or fire resistant, anti magnetic.						
Hinge Material	No Hinge (dust proof and elastic in all directions)						
Installation	By using an electrical screw driver, a hand brace or a pneumatic screw driver						
Packaging	In lengths up to 3mtr in one piece or on a roll of up to 25mtr						
Features	Good compatibility with scrapers, very good wear resistance and long life time; installation regardless of weather and difficult accessibility						
Typical Rubber Belts	EP 250; EP 315 EP 400 (short)	EP 500; EP 630 EP 800 (short)	EP 800 for crushers In Mining Industry	EP 1000 EP 1250 In Mining Industry	EP 1250 EP 1600 In Mining Industry	EP 1600 EP 2000 In Mining Industry	EP 2000 EP 2500 In Mining Industry