

K-Side Guide Rollers

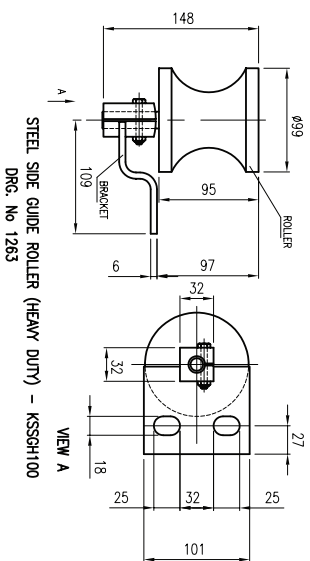


For various reasons conveyor belts mistrack, therefore the application exists for conveyor side guide rollers.

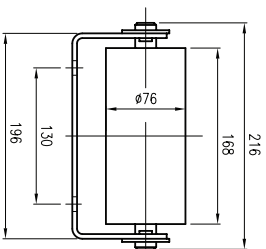
In other words, guiding does not eliminate the true reason for the belt tracking off and it is advisable to examine the root cause of the problem.

By examining the cause this may limit the chance of belt riding over the guide roller and causing further belt damage.

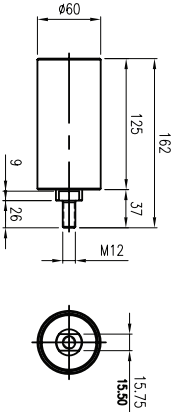
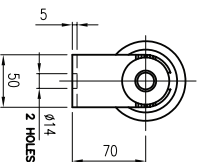
Therefore guide rollers should be used with the correct transom bracket or pivoting self-centralizing, transom which rotates freely when the belt mistracks.



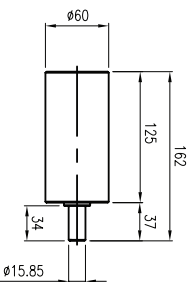
STEEL SIDE GUIDE ROLLER (HEAVY DUTY) – KSSGH100
DRG. No 1283



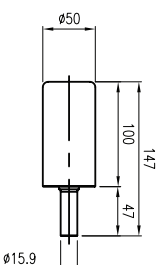
STEEL SIDE GUIDE ROLLER Ø76x168
DRG. No 1147



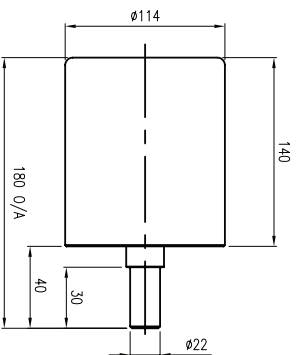
STEEL SIDE GUIDE ROLLER #60x125 – PLAIN (TYPE A), M12
TSK 762



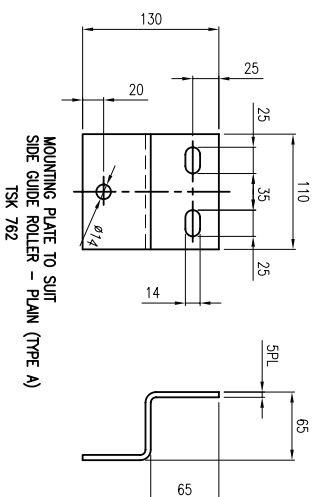
STEEL SIDE GUIDE ROLLER #60x125 – PLAIN (TYPE B)
TSK 520



STEEL SIDE GUIDE ROLLER #50x100 – PLAIN (TYPE C)
TSK 5398



STEEL SIDE GUIDE ROLLER #114x140 – PLAIN (TYPE B)
TSK 522



MOUNTING PLATE TO SUIT
SIDE GUIDE ROLLER – PLAIN (TYPE A)
TSK 762

Specifications subject to change without notice.
Certified drawings are available on request.

K-Side Guide Rollers